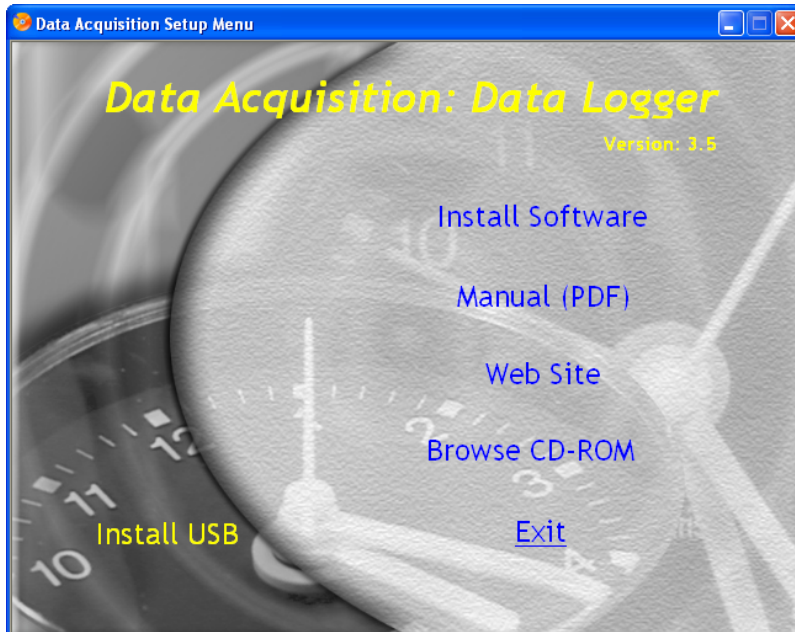


AZ USB Interface and Driver Installation

DO NOT PLUG THE USB INTERFACE AND CABLE IN YET!

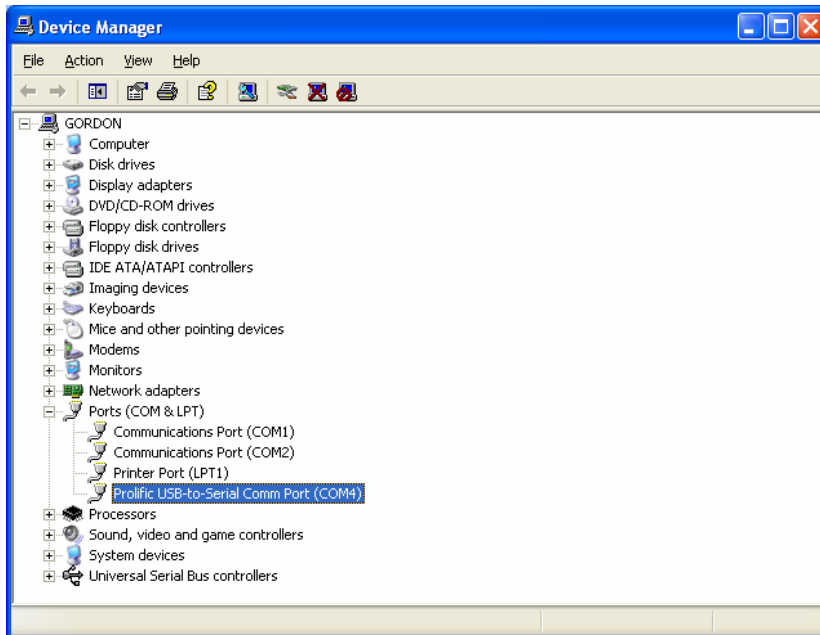
- 1) Insert the Data Logger Software CD (It should auto-run)
- 2) Window appears “**Data Acquisition Setup Menu**”



- 3) In bottom left of window click “**Install USB**” and follow the instructions until the USB driver installation has finished. Select “**Yes**” to reboot your computer now.
- 4) When computer is up and running again, plug the USB interface and cable into a free USB port on your computer and watch the bottom right of your computer screen. Windows should show a message “**New Hardware Found**”. Wait for Windows to install the hardware until you see the message “**Your New Hardware is Installed and Ready to use**”
NB! If drivers have been previously installed then this step will not happen, you will only hear a sound that new hardware has been plugged in.
- 5) You now need to find out what COM Port number has been assigned to the USB interface by Windows. The supported range of COM Ports for the Data Logger Software is COM 1 to 8. Anything outside this range will not work and the port number will have to be changed. *Note: Port numbers can only be changed in Windows XP, earlier versions of Windows do not support COM number changes and you will need assistance from your IT department.*
- 6) To find out the COM Port number and to make sure it is within range, do the following: (Depending how your Windows is configured, these steps may differ slightly)
Click “**START**” ► “**Settings**” ► “**Control Panel**”
Under Control Panel find the “**System**” icon and double click to open System Properties.
Click on the tab labeled “**Hardware**” and then click the button labeled “**Device Manager**”
In the list of hardware, click on the + next to “**Ports (COM & LPT)**” to expand the options.

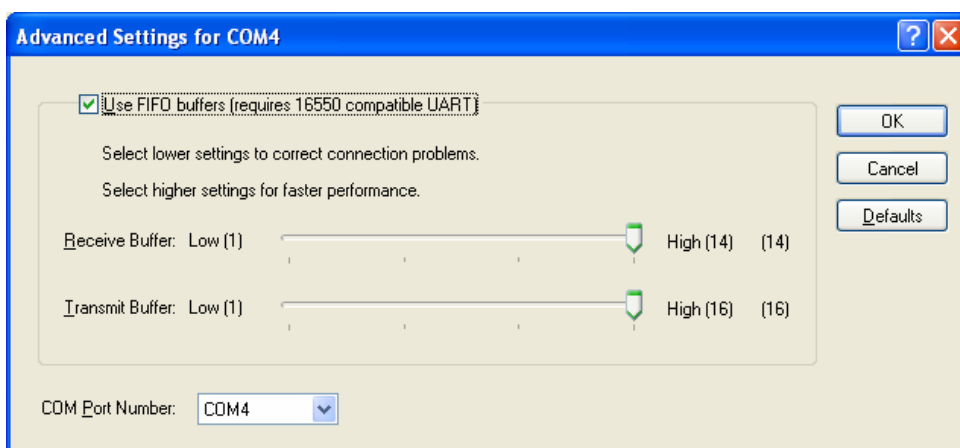
You should see one of the options as “**Prolific USB-to-Serial COMM port (COMx)**” where **x**= the COMM Port number assigned by Windows. (See picture below)

If **x** is within the range of 1 to 8 then all you need to do is remember this number to setup the Data Logger Software correctly and continue to step 8.



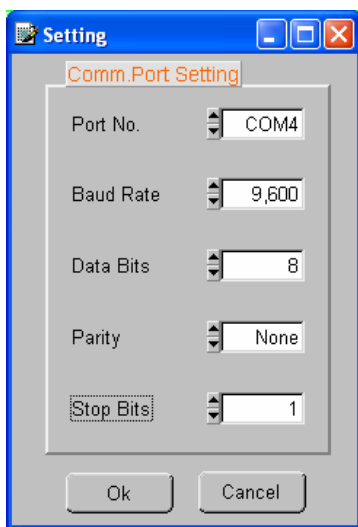
NB! If x=9 or higher then you need to follow step 7

- 7) To change the COMM Port number, double click on the device name “**Prolific USB-to-Serial COMM Port (COMx)**” and a properties window will open. Click on the tab labeled “**Port Settings**” and then click on the button labeled “**Advanced**” In the bottom left of the Advanced Settings window change COM Port Number to a free COMM Port in the range of 1 to 8. If there are no free COMM Ports in this range then you will need the assistance of your IT department to free up a COMM Port for you.



AZ Data Logger Software Installation

- 8) Insert the Data Logger Software CD (It should auto-run)
 “Data Acquisition Setup Menu” Window appears same as in step 2 above.
 Click “Install Software” and follow the instructions until the installation is finished. Select “Yes” to reboot your computer now.
- 9) When your computer is up and running again, open the Data Logger Software as follows:
 Click “START” ► “Programs” ► “TRLog” ► “TRLog”
- 10) Click “COMM Set” at top of window (third button from the left)
 The COMM Port setting window appears. In the first line change the Port No. to match the number you found in step 6 or set in step 7. Click “OK” button to accept the change.



- 11) At this point, in the bottom left of the window you should have a message in **RED** showing “Warning: Data Logger is not plugged into interface module”
- 12) Make sure a battery is installed in your data logger. Clip the data logger into the USB interface module and the message in the bottom left of window should change to **BLUE** and read “Get Templog’s previous setting message”

Your USB interface and Data Logger Software are now ready to use.

NB!! If you unplug the USB interface and cable from your computer then you must make sure that you always plug it back in the same USB port. If a different USB port is used then you will have to do this whole setup procedure again for the new port.