

# XR5-SE Compact Data Logger

## Eight Analog and Three Pulse / Frequency Inputs



### Introduction and Features :

- ↪ FREE LogXR configuration and graphic analysis software
- ↪ User updatable Firmware - free lifetime updates
- ↪ Battery powered or by optional external 8~14VDC supply
- ↪ Battery life up to 2 years - user replaceable
- ↪ Clock and calendar for real time based data
- ↪ 63,642 analog reading memory with option for 260,250
- ↪ Fast or slow logging from 1000Hz to 12 hour intervals
- ↪ Recording modes - Instant, average or maximum
- ↪ Stop when memory full or wrap around (continuous)
- ↪ Alarm limits - Individually set high / low for each channel
- ↪ Alarms can trigger logging, activate an external output, dial-out or generate a SMS with an optional modem
- ↪ Real-time display while connected to computer
- ↪ Password protection for setup and data transfer
- ↪ Secure transferred data to US FDA 21 CFR Part 11
- ↪ Ethernet and modem connectivity support
- ↪ Over 30 direct connect sensors - No external power

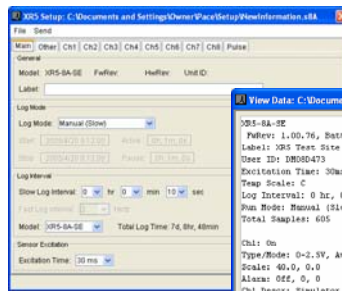
### Measurements

(with optional direct connect sensors)

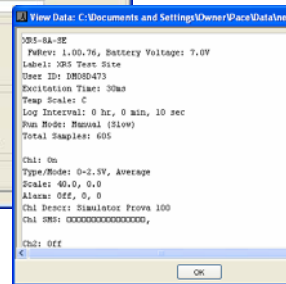
- ⌋ Thermocouples
- ⌋ Temperature and Humidity
- ⌋ Soil Moisture
- ⌋ Wind Speed and Direction
- ⌋ Rainfall and Solar Radiation
- ⌋ Pressure - Air, Gas, Liquid and Baro.
- ⌋ Process Signals 5VDC / 4-20mA
- ⌋ AC / DC Voltage and Current
- ⌋ Event recorder to nearest sample interval
- ⌋ Counting and Rate

### Applications

- ⌋ Weather Monitoring
- ⌋ HVACR and Research
- ⌋ Greenhouses and Agriculture
- ⌋ Production and Maintenance

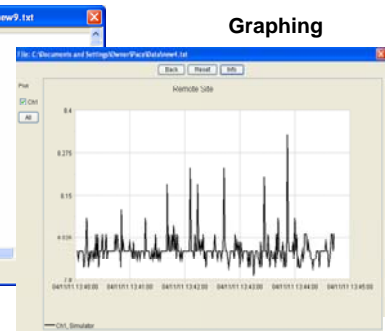


Setup Screen



Tabular View

### Free LogXR Software



### Specifications :

<b>Analog Inputs:</b>	8 x 12-bit resolution (1 in 4096) 0-2.5V Input Accuracy $\pm 0.2\%$ FS 0-5V Input Accuracy $\pm 0.4\%$ FS Input Impedance $> 10M\Omega$	<b>Pulse / Hz Inputs:</b>	3 x 24-bit counters (X,Y,Z) <b>Maximum count:</b> 16,777,215 per sample interval <b>Dry Contact:</b> Maximum 15Hz (3.3V bias from XR5) <b>Voltage Pulse:</b> Maximum 900Hz (2.3 - 18VDC)
<b>Optional mV Input:</b> (Only one range allowed per logger)	20, 50, 100, 250, 500 or 1000mV Factory fitted - applies to all 8 channels Low Range Accuracy $\pm 0.5\%$ FS High Range Accuracy $\pm 0.7\%$ FS	<b>Alarm Output:</b>	Channel Z - 1.8V active / 0.25V inactive
<b>Thermocouples:</b> (Needs 20mV or 50mV Option)	Types K, J, E, T, R, S, N, B, C Accuracy and Range T/C Dependant Please request separate literature	<b>Ext. Trigger Input:</b>	Channel X - Dry contact or Voltage
<b>Binary Input:</b>	Dry contact - Open = 1 / Closed = 0 Voltage - 2V to 5V = 1 / 0V to 1V = 0	<b>Sensor Excitation:</b>	2.5VDC/50mA or 5VDC/30mA
<b>Size:</b>	124 x 56 x 32.5mm and 120g	<b>Excitation Time:</b>	Selectable 30mS, 150mS, 1, 5 and 10S
		<b>Logging Modes:</b>	Manual, Pre-set date/time, on Alarm, Cycle, External Trigger
		<b>Status Indicator:</b>	Green flashing LED / Red in alarm
		<b>Power:</b>	2 x AA 3.6V Lithium (user replaceable) Optional 8-14VDC by regulated PSU
		<b>Environmental:</b>	IP50 / -40°C to 60°C / 5~90% RH

## A.W.R. SMITH Process Instrumentation CC

PO Box 449 Pinegowrie 2123 tel: 011 782 7279 fax: 011 782 6840 sales@instruments.co.za

[www.instruments.co.za](http://www.instruments.co.za)