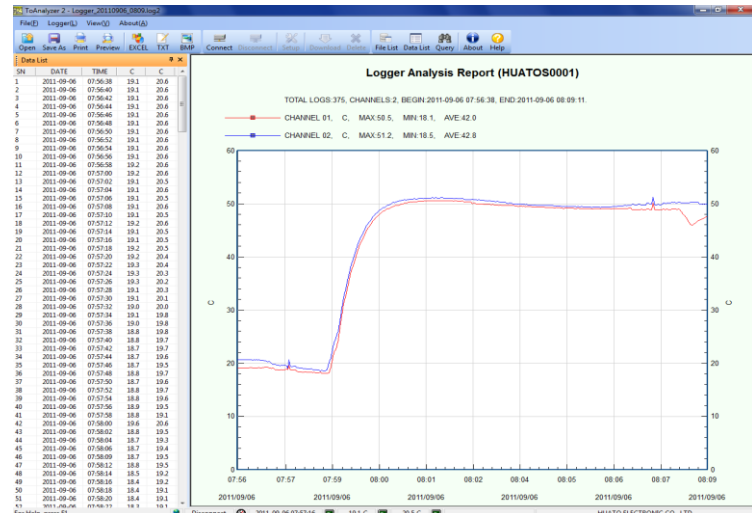


S210-R2H dual input PT100 data logger



Features:

- Two channel PT100 input (probes not included)
- Dual LCD with real-time display of temperature and logger status
- 43,000 record memory (1 record = all channels)
- USB port to connect to PC for data download, setup and graphing
- Export data as Text (.txt) or Excel (.xls) file
- Maximum/minimum display and alarm function
- Low power indication, display off button to extend battery life
- Battery life: approx. 300 hours (measure and record every 10 seconds)
- DC jack for external power supply (AC adapter included)
- IP40 housing
- Wall mounting or free standing
- Size: 103 x 82 x 24mm

Technical Specifications

Measuring range	-199.9 to +600.0 °C (probe dependent)
Battery Life	Approx. 300 hours at 10 second sample/log intervals 1.5V AAA Alkaline Battery × 2
Accuracy	±0.5 °C (excludes probe error)
Memory Capacity	43,000 data points
Recording Mode	Stop when memory full or FIFO rollover selectable via the software
Display Current Readings	Dual Display – each input with logger status
Start-Up Delay	Minimum: 2 seconds Maximum: 300 days
Buttons	Four - Start/stop logging, On/off, Min/max and LCD on/off
Waterproof protection	IP40
Programmable Measurement Interval	Minimum - 1 seconds (only about 50 hour battery life) Maximum -24 hours
Connector	8-way removable screw terminal and USB
Accessory	AC adapter, batteries, Software CD and USB connection cable

Distributor:

AWR Smith Process Instrumentation cc
 PO Box 449 Pinegowrie 2123
 Tel: 011 782 7279 / 888 7144 Fax: 086 648 7664
 e-mail: sales@instruments.co.za website: www.instruments.co.za