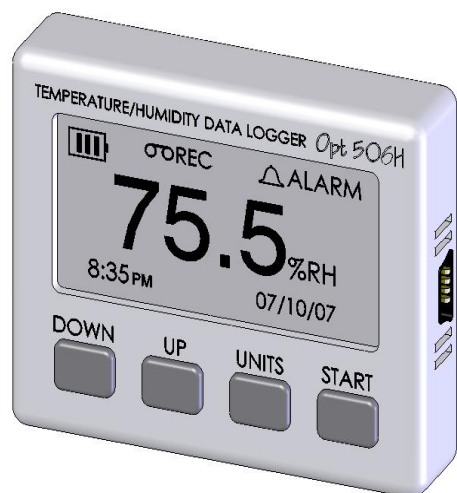


Opt506H Temperature/Humidity Logger with Display

Complete with OptiView® software and USB cable



Actual size

Features

- LCD real time display of temperature (°C or °F), Relative Humidity (RH%), Time, Date, Alarm Status, Recording Status and Battery Condition
- Capacity: 43344 points for temperature only. 21672 points of temperature, humidity and dew point
- Read Recorded Data on Logger Display
- Displays Alarm Icon for high / low alarm conditions
- User-selectable:
 - Start on Button Press, After Setup or specified Time and Date
 - Sampling interval: 1 sec to 18 hours
 - Recording modes: Stop when full or Wrap around when full
 - Set points for high and low temperature and high and low %RH alarm
- Nonvolatile EEPROM memory retains data even if battery fails
- User-replaceable CR2032 Coin Cell lasts 3 years (typical)
- Battery powered for continued monitoring/logging during power outages
- USB Interface for fast data transfer
- Ideal for Transportation, Product Monitoring, and HVAC application
- Compact Size and Lightweight
- NIST-traceable certification available (at additional cost)
- Software and Cable included

Opt 506H Specifications

Ambient Temperature Range	-4°F – 160°F (-20°C – 70°C)
Storage Temperature	-40°F – 170°F (-40°C – 77°C)
Sample Rate	1 Second to 18 Hours User Selectable
Alarm Settings	Over / Under alarm with Visual Indication
Display LCD	Temperature and RH%, Date, Time, Alarm Condition and Battery Condition
Time Accuracy	+/-100ppm @75°F
Temperature Accuracy	+/-1°F (0.5°C)
Temperature Resolution	0.05°F (0.1°C)
Relative Humidity Range	0% to 99%RH, non-condensing
Relative Humidity Accuracy	+/- 2%RH, from 10% to 90% RH
Relative Humidity Resolution	0.05%RH
Measurement Capacity	43344 points for temperature only. 21672 points of temperature, humidity and dew point. Non-Volatile memory
Recording	Start On button press, immediate after setup, or at a user specified date and time
Recording Mode	Stop on memory full, or continuous recording with memory rollover
Minimum System Requirements	8MB of RAM, 2M of disk space, 800 x 600 resolution, 1 free USB port
Software Compatibility	Windows 98SE, Windows ME, Windows 2000, Windows XP, Vista.
Interface	USB 2.0
Power Source	3V CR2032 Lithium battery (Included)
Battery Life (avg)	3 Years
Size	2.24" (5.7cm) x 2.36" (6cm) x 0.51" (1.3cm)
Weight	3.2 oz (91gm)

Logged recorded data and alarms can be viewed on the LCD display
Applications

Coolers, Freezers, Greenhouses, Florists, Museums, Laboratories, Medical Storage, Wine Cellars, Shipping Containers, Warehouse, Environmental Monitoring, Food Storage, Display Cabinets, Refrigerated Transports

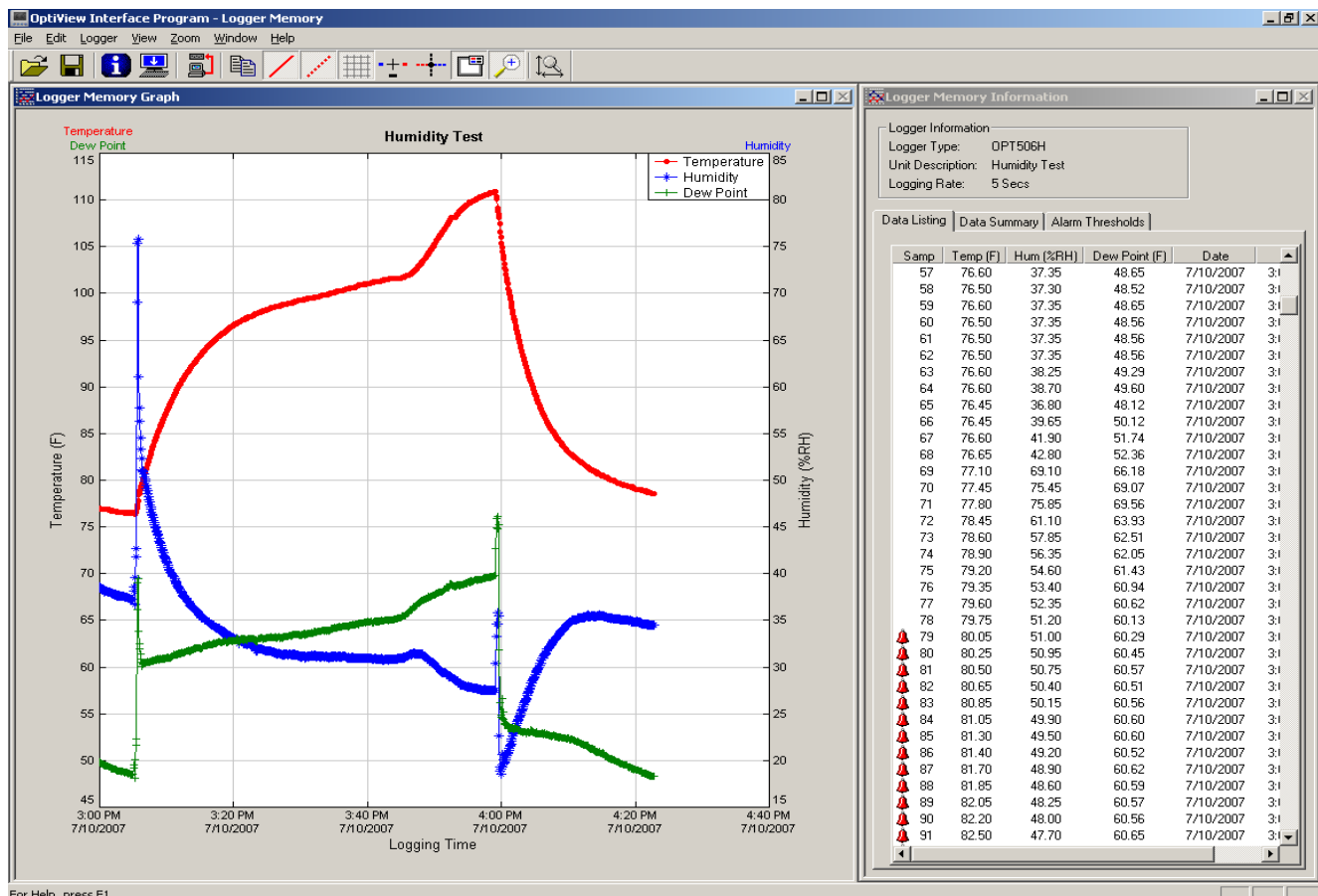
OptiView® Software

The OptiView® software is an easy to use, Windows based software package that provides rapid retrieval and analysis of data recorded by the Opt series of data loggers.

OptiView® is compatible with Windows 98(SE), Windows ME, Windows XP, Windows 2000 and Windows Vista.

OptiView® Features

- USB 2.0 for fast data transfer
- Data Summary to read statistics and alarm information in a simplified report format.
- Data Listing for tabular view of detailed dates, times and values of recorded data.
- Graph function displays data in clear graphical format.
- Zoom magnifies data with powerful zoom and autoscale functions.
- Autoscale function fits data to the screen or allows user to manually enter their own values.
- Graphical Cursor displays exact data of any point in the graphical display.
- Export data in text or Excel format.
- Print graph or text data with print preview and setup options.
- Logger Configuration allows easy set up and launch of data loggers with immediate or delayed start, preferred sample rate, alarm setup, and custom ID.
- Password protected calibration function automatically stores parameters in device or restores factory defaults. A calibration Window is provided in the software to simplify the calibration procedure.
- Status windows display unique ID of logger, battery voltage, memory used, sample rate, duration, alarm condition and logging status.
- Menu Bar along the top of the screen provides one click access to software functions.



For Help, press F1